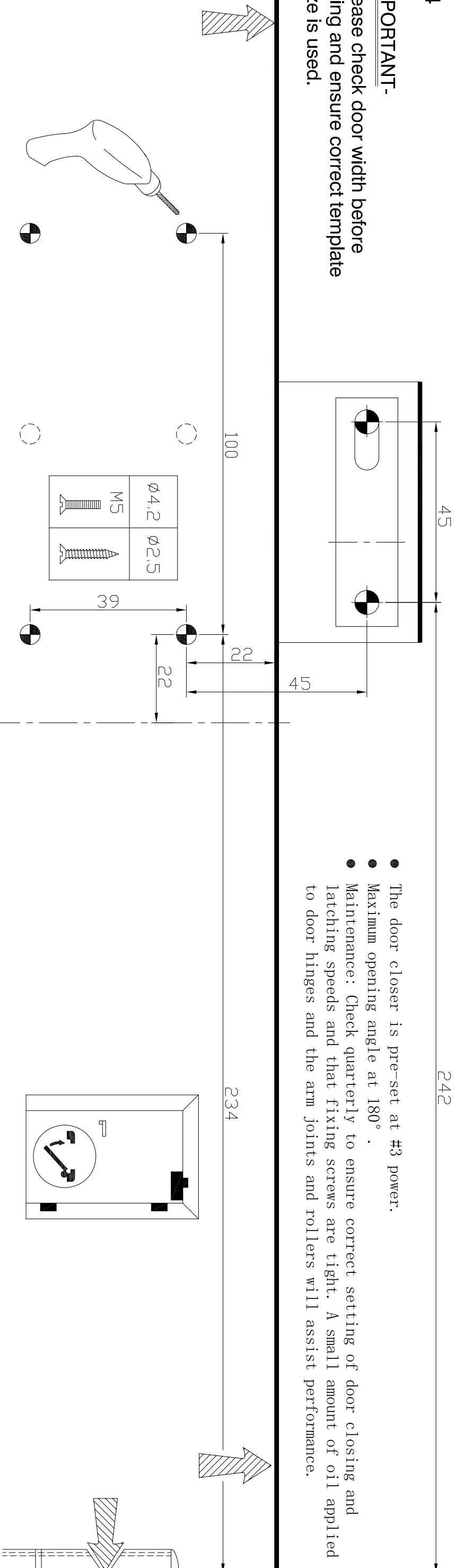


IMPORTANT-

Please check door width before fitting and ensure correct template size is used.



- The door closer is pre-set at #3 power.
- Maximum opening angle at 180° .
- Maintenance: Check quarterly to ensure correct setting of door closing and latching speeds and that fixing screws are tight. A small amount of oil applied to door hinges and the arm joints and rollers will assist performance.

● Determine the installation position of the door closer place the template on the closed door and the top jamb, and make holes in them with a punch or other proper tools

① Template

● Fix the link shoe to the top jamb .

● Fit the lever to the pinion shaft and fix it firmly with the screw .

● Mount the closer on the door

① Link shoe
② Door closer ③ Lever
④ Mounting screw

● Adjust the link length so that the link makes a right angle with the top jamb, and fix with the lock nut.

● FIX PINION CAP TO CLOSER BODY

OVER ADJUSTMENT WILL LEAD TO OIL LEAKAGE WHICH WILL AFFECT THE PERFORMANCE OF THE CLOSER . IN SUCH INSTANCES OUR GUARANTEE BECOMES VOID .

FAST SLOW

BACK CHECK (OPTIONAL)

DELAYED ACTION (OPTIONAL)

No.1 CLOSING

No.2 LATCHING

Power adjustable

● Adjust the closing speed. The door closer closes the door at two different speeds. The first speed can be controlled by the No. 1 speed adjusting valve, and the second speed, by the No.2 speed adjusting valve.

① CLOSING ② LATCHING

Delayed Action

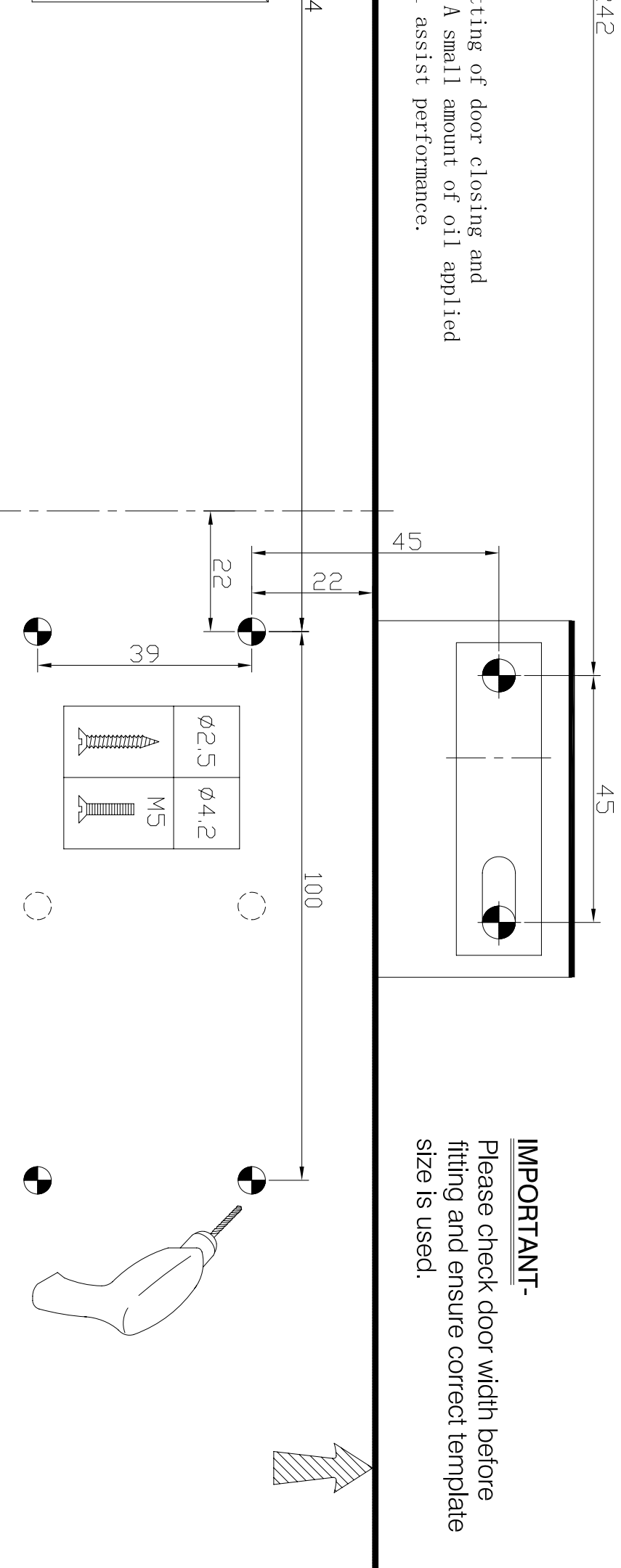
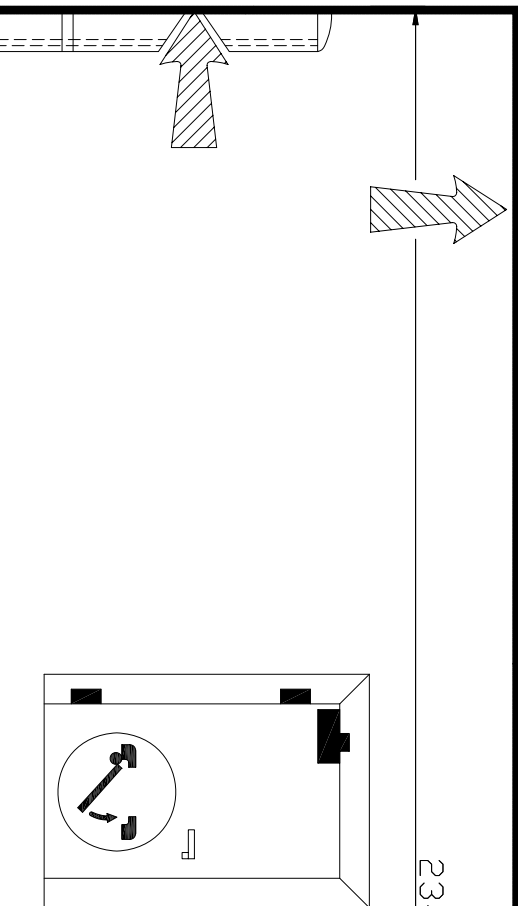
Back Check

Size Force		Size Force		Max. door width	
-	+	-	+	-	+
About -5 turns	About 0 turn	2	3	850mm	950mm
About +5 turns	About +9 turns	4	5	1100mm	1250mm

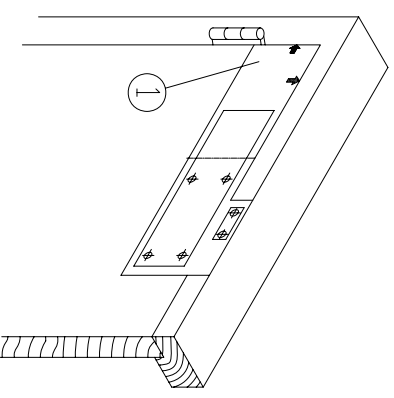
242

45

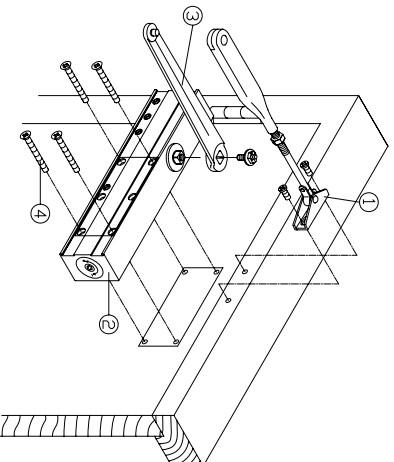
- The door closer is pre-set at #3 power.
- Maximum opening angle at 180° .
- Maintenance: Check quarterly to ensure correct setting of door closing and latching speeds and that fixing screws are tight. A small amount of oil applied to door hinges and the arm joints and rollers will assist performance.



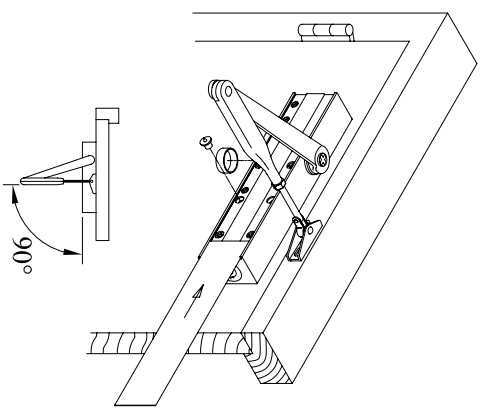
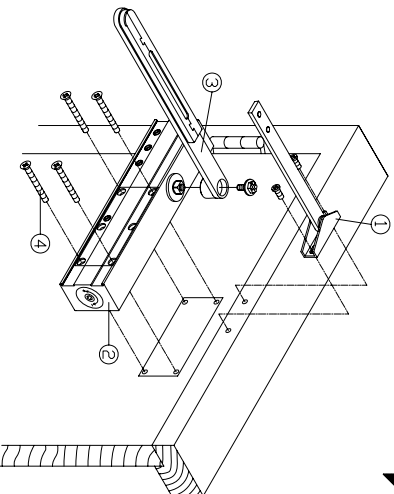
IMPORTANT-
Please check door width before fitting and ensure correct template size is used.



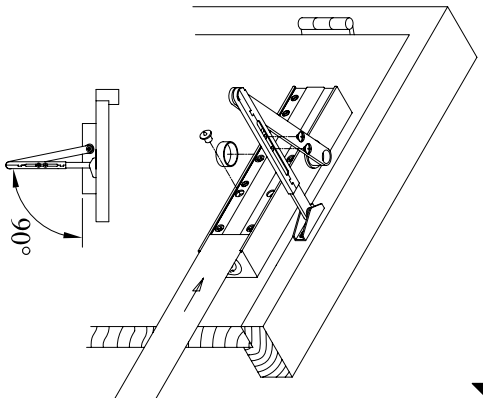
- Determine the installation position of the door closer place the template on the closed door and the top jamb, and make holes in them with a punch or other proper tools
- ① Template



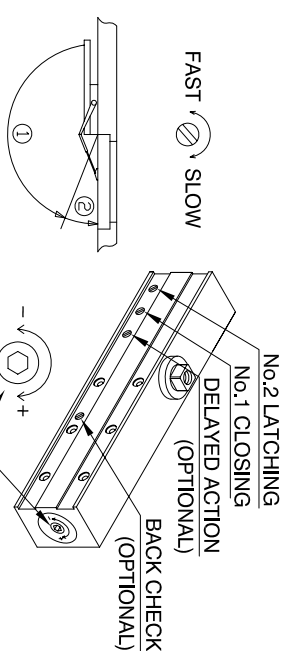
- Fix the link shoe to the top jamb .
- Fit the lever to the pinion shaft and fix it firmly with the screw .
- Mount the closer on the door
- ① Link shoe
- ② Door closer
- ③ Lever
- ④ Mounting screw



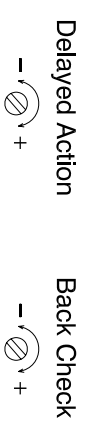
- Adjust the link length so that the link makes a right angle with the top jamb, and fix with the lock nut.
- FIX PINION CAP TO CLOSER BODY



OVER ADJUSTMENT WILL LEAD TO OIL LEAKAGE WHICH WILL AFFECT THE PERFORMANCE OF THE CLOSER . IN SUCH INSTANCES OUR GUARANTEE BECOMES VOID .



- Adjust the closing speed. The door closer closes the door at two different speeds. The first speed can be controlled by the No. 1 speed adjusting valve, and the second speed, by the No.2 speed adjusting valve.
- ① CLOSING
- @ LATCHING



Size Force		Max. door width	
-	+	2	850mm
About -5 turns		3	950mm
About 0 turn		4	1100mm
About +5 turns		5	1250mm
About +9 turns			