

**HOMEGUARD** *Pro*  
SMART HOME SECURITY MADE SIMPLE

# QUICK INSTALLATION GUIDE

Cloud Alarm System  
Access from anywhere, anytime

**ERA**

# STEP 1

Download the  
'**ERA HomeGuard PRO**'  
Alarm App



Download the App from App Store or Google Play by searching the keywords: "ERA HOMEGUARD PRO".

ERA HOMEGUARD PRO | 🔍



Add an IP Camera (HD WiFi Camera\*) on to the ERA HOMEGUARD PRO App to access live viewing of your home anywhere, anytime.

# STEP 2

Register and sign in  
to access your  
account



Select 'Sign up' and follow the instructions to register for an account.

Once registered select 'sign in' and enter your Username and Password again to access your HomeGuard Pro Account.

Option to remember your details if you want to automatically sign into your HomeGuard Pro Account.

# STEP 3

Add **HomeGuard Pro Hub** to your account

- 1 Once signed in add your HomeGuard Pro Hub to your account using the WiFi HOTSPOT or the QR Code located on the back of the Hub.
- 2 Follow the on-screen instructions on the HomeGuard Pro App to successfully add your HomeGuard Pro Hub to your account.
- 3 Your HomeGuard Pro Alarm System is now connected to your HomeGuard Pro account.

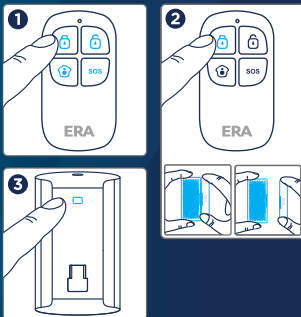


# STEP 4

Test your **HomeGuard Pro Kit**

Test the pre-programmed system with accessories

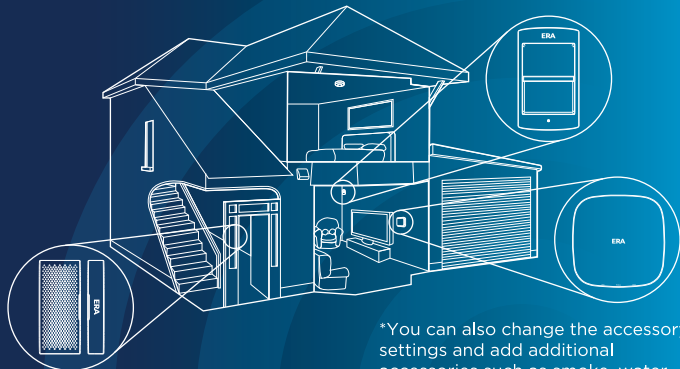
- 1 **Remote Control (EREM)**  
Press any button on the remote control to test the connection.
- 2 **Door/Window Sensor (EMAG)**  
Set the Hub into Armed status, trigger the door/window sensor by separating the magnet and transmitter to test the connection. **Note:** Do not use the tamper button on the rear to pair with the hub or you will pair the sensor in 24hr mode
- 3 **PIR Motion Sensor (EPIR)**  
Set the Hub into Armed status, press the Test button at the back more than twice to test the connection.



# STEP 5

Install your **HomeGuard Pro Hub** and Accessories

Install the Hub and accessories to your selected locations.

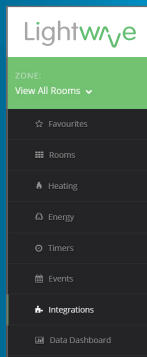


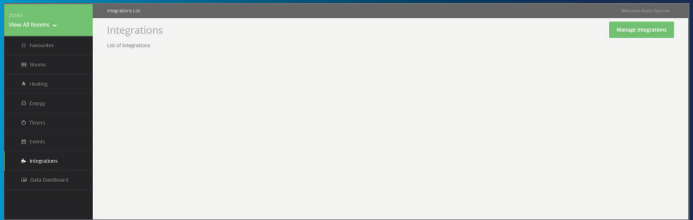
\*You can also change the accessory settings and add additional accessories such as smoke, water and vibration within the APP.

# STEP 6

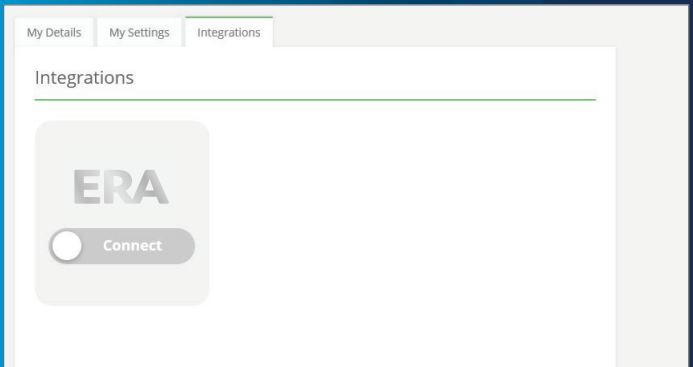
Link **Lightwave** to your **HomeGuard Pro Hub**

- 1 If you do not have a Lightwave account please visit <https://manager.lightwaverf.com/>, register for an account following the instructions on the main page.
- 2 Once registered, sign in using your username and password, the user will need to go to the tab which appears in the left hand menu as, 'Integrations'. Select this tab.
- 3 This menu will bring a page up which has a button in the top right called 'Manage Integrations'. Select this button.





Clicking 'Manage Integrations' will take you to the below view (which can also be accessed by selecting 'My Account' in the top right of the page).



To connect/disconnect, click the bar below the 'ERA' logo. If 'disconnecting', the HomeGuard Pro system previously registered will no longer respond to the Lightwave account and vice versa. If 'connecting', you will be taken to the following screen.

The user should enter their HomeGuard Pro account details and click 'Sign in'. Successfully signing in will return the user to the Integrations page, now showing that a system is registered.

You have now successfully linked the HomeGuard Pro Alarm HUB to the Lightwave account.

If you intend to add a new HomeGuard Pro setup, simply disconnect (as shown above) and connect the new system. The integration will ignore any previous connected system and only retain the latest one.

**HOMEGUARD**

User Email

Password

Sign in



**Customer Helpline:  
0345 257 2500**

**[www.eraeverywhere.com](http://www.eraeverywhere.com)**

**ERA Home Security Ltd**  
Valiant Way, Wolverhampton  
West Midlands, WV9 5GB  
email: [support@eraeverywhere.com](mailto:support@eraeverywhere.com)